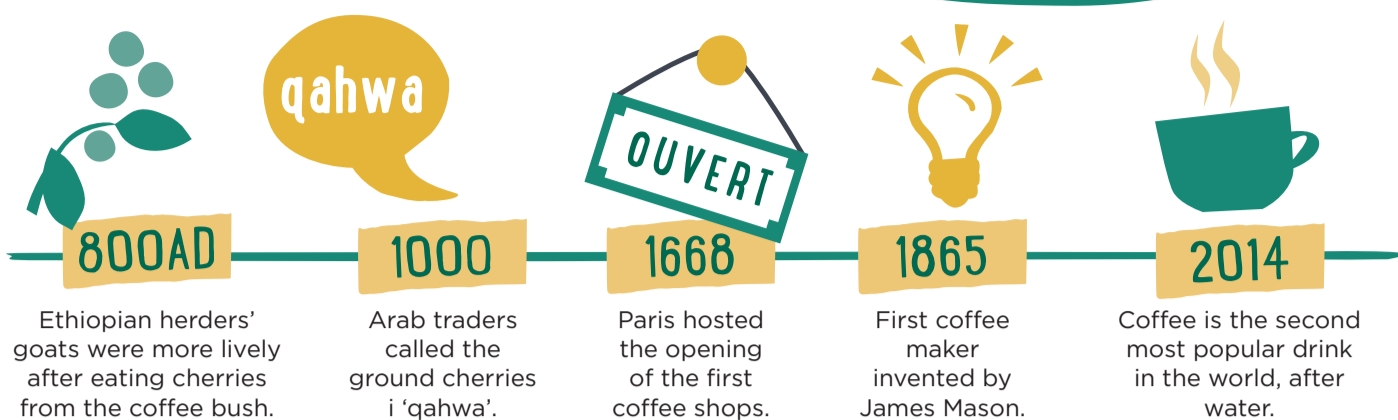


WHEN THE WORSHIP ENDS, THE SERVICE STARTS!

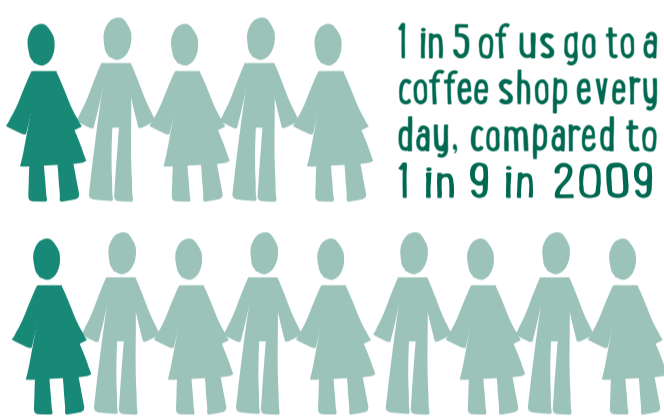


40% of the world's coffee is produced by Colombia and Brazil

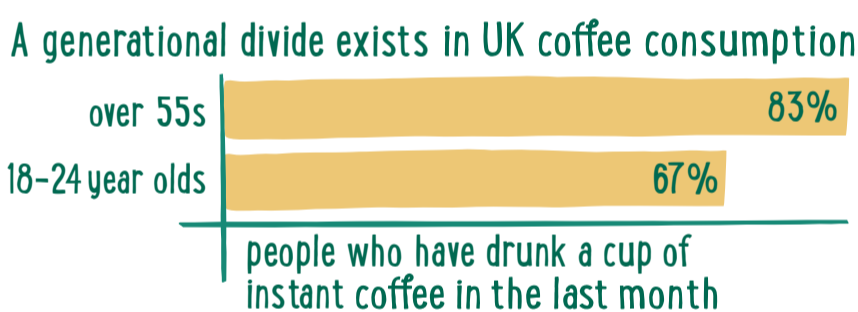


It takes 42 coffee beans to make an espresso

The UK drinks **1.7 billion** cups of coffee annually in coffee shops



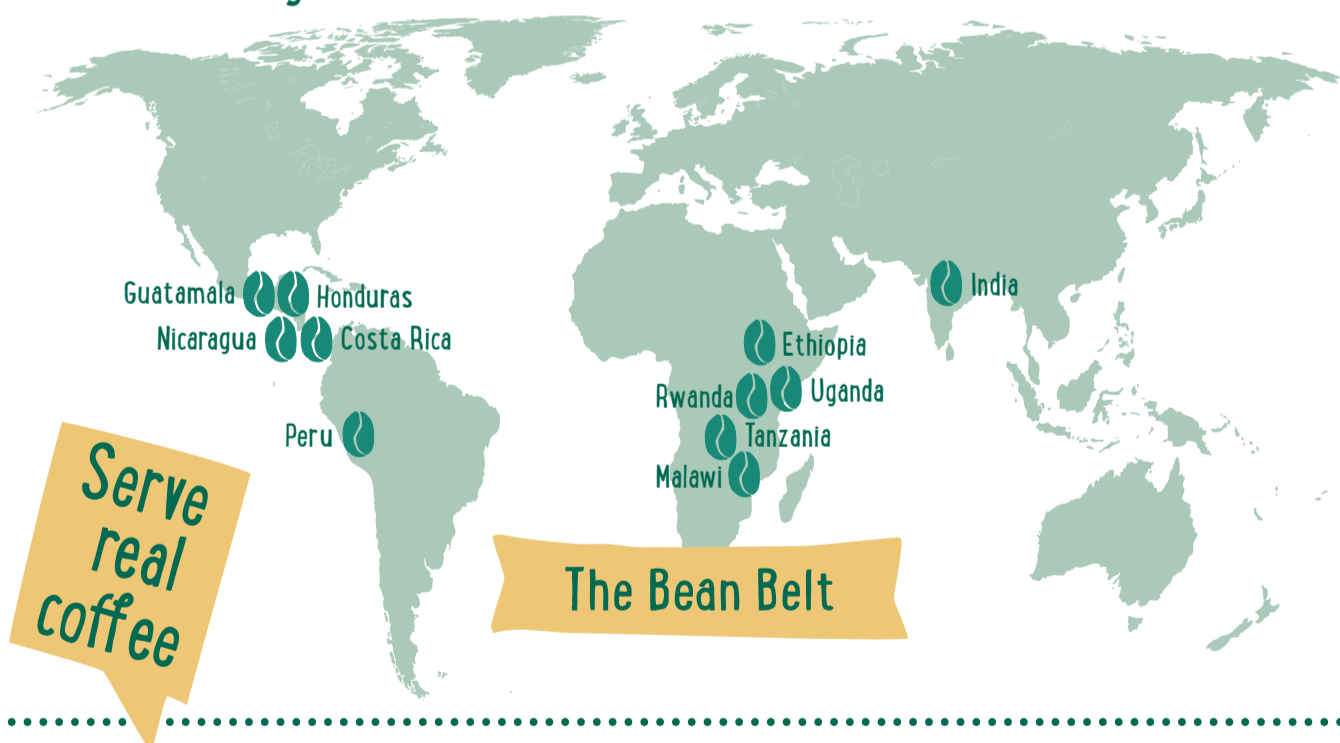
When we drink coffee at work or at home, we now prefer ground coffee



Young people love real coffee in church



Traidcraft buys its beans from...



In taste tests at the Christian Resources Exhibition 2013, **90% PREFERRED** ground coffee

Traidcraft medium roast ground coffee: 227g bag serves 50 people

The average take-away	£2.20 a cup
Traidcraft percolated	6p a cup
Price per cup of ground coffee	

Be a welcoming church, serve great tasting fair trade ground coffee.

Find out more at traidcraft.co.uk/coffeeinchurch



Sources: * Market Research Specialist Allegra.